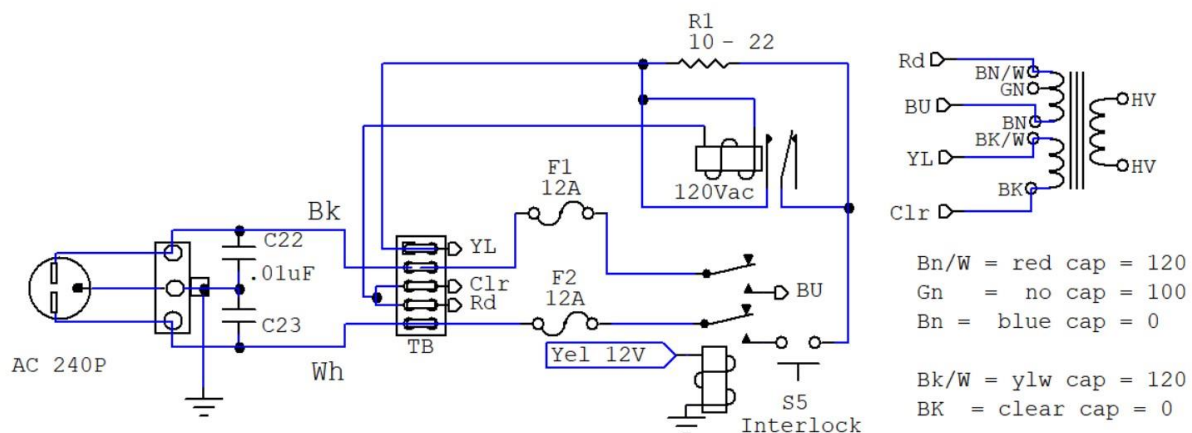
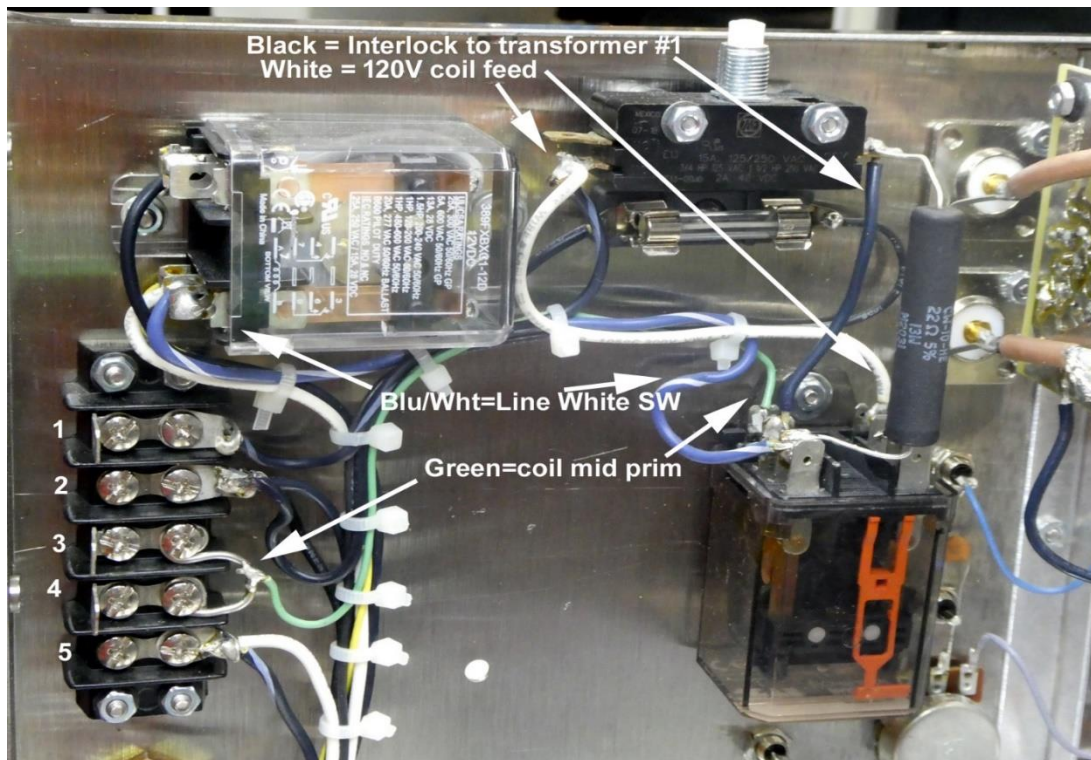


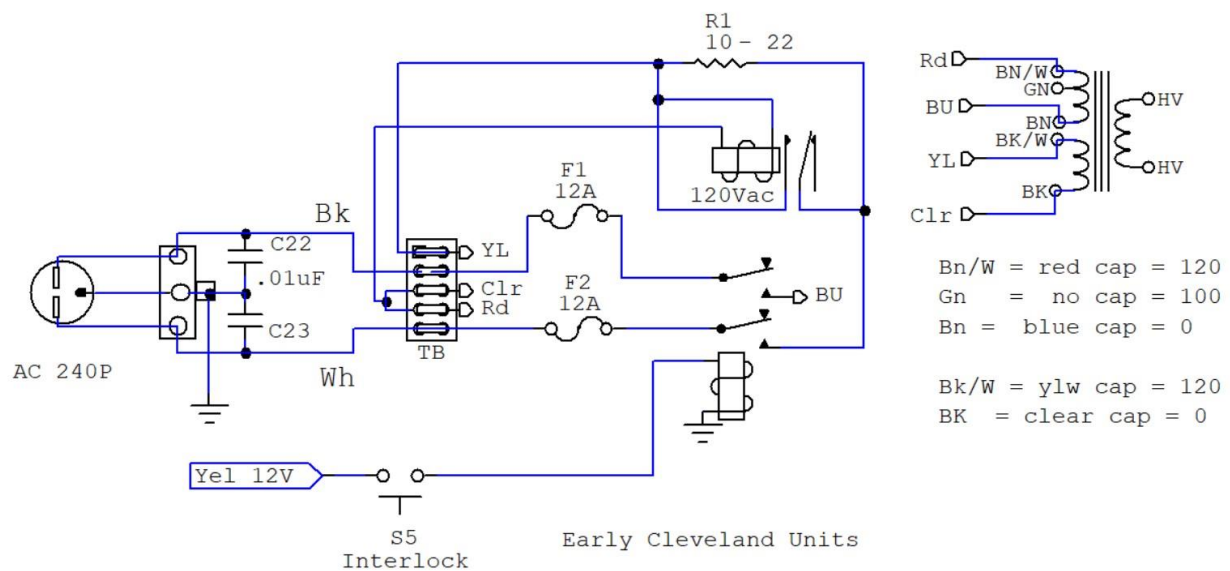
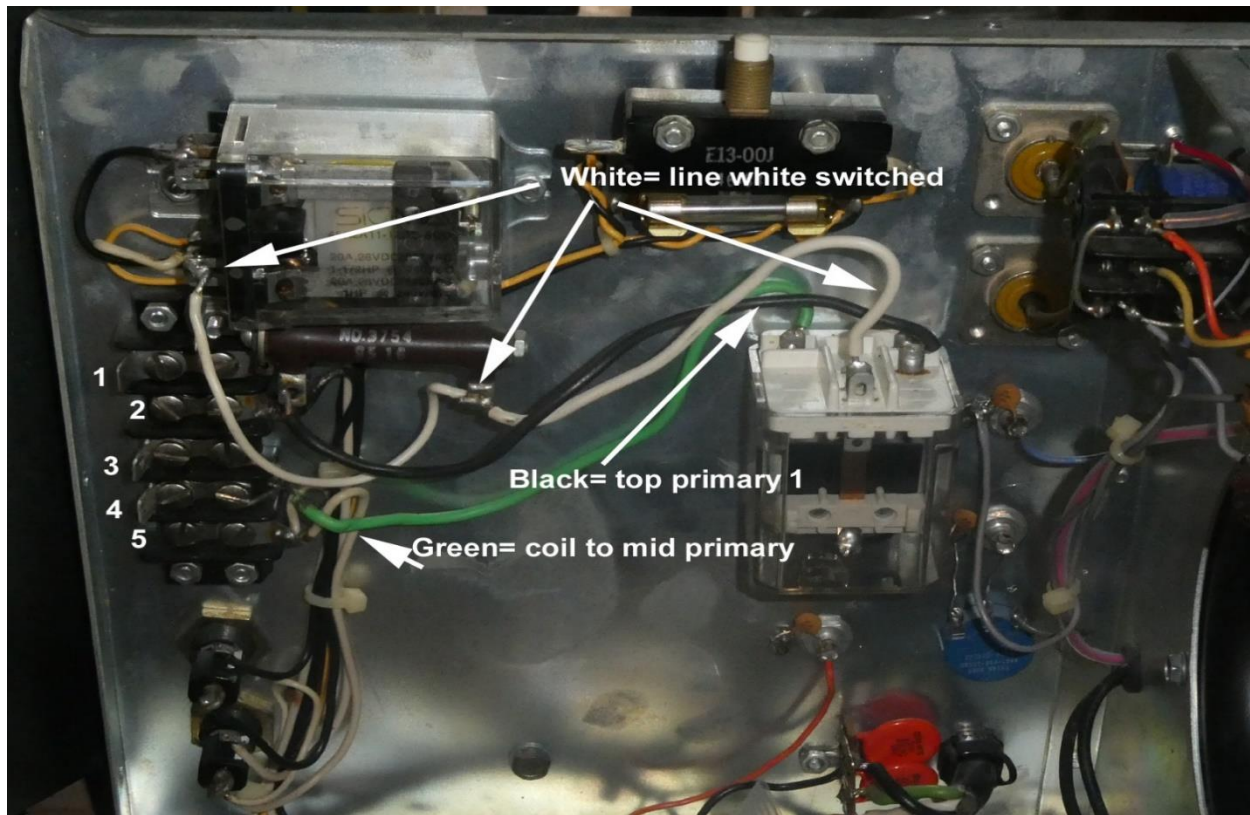
Universal Step Start AL82, AL1200, AL1500

10/3/22 rev1

Universal Step Start installation in the AL12 series amplifiers is very simple. This unit will replace the noisy 1983-era design in the AL12 series. This is a later OEM unit:



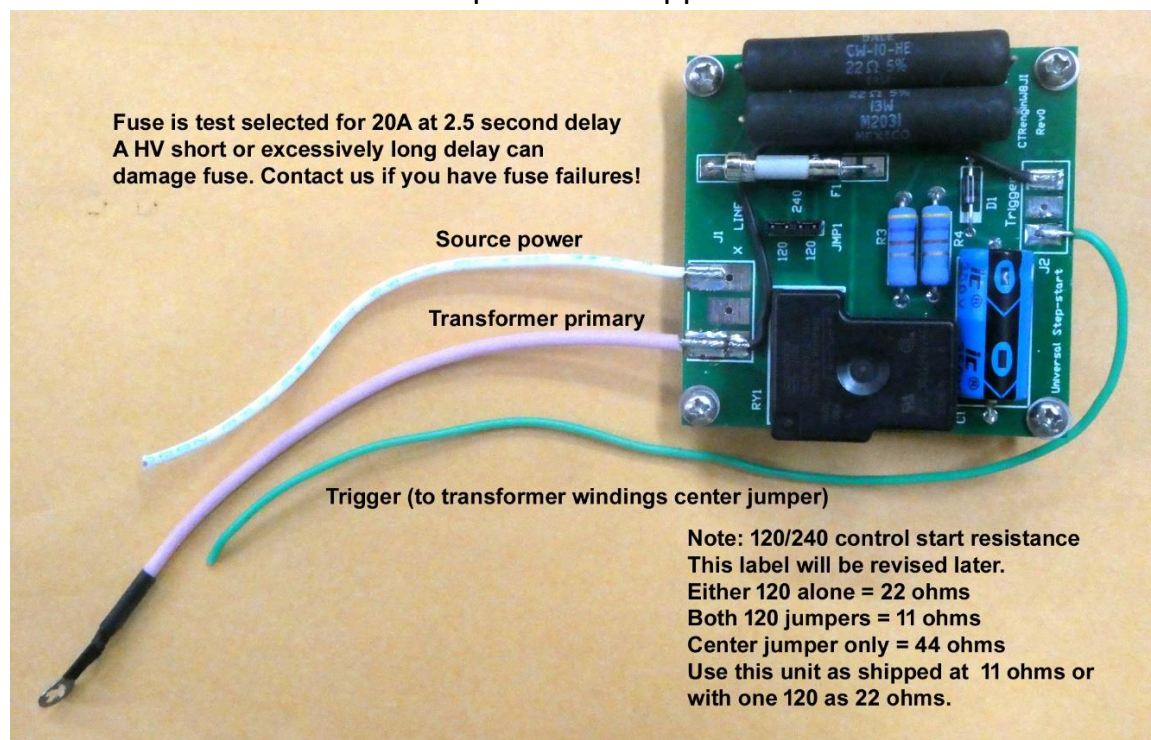
This is the early OEM unit:

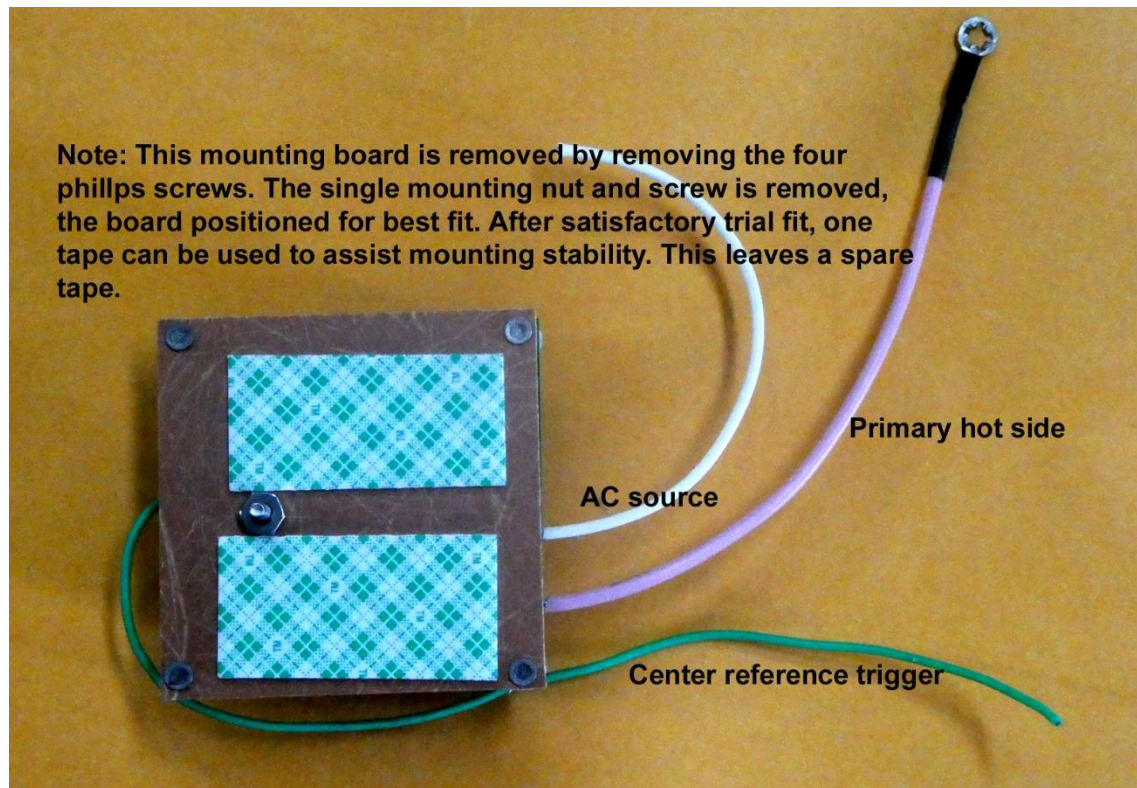


- 1.) Remove the power cord from the outlet, **then** remove the top cover. **Be absolutely sure the amplifier is unplugged and the HV meter is resting at zero volts!**
- 2.) Remove the power transformer
- 3.) In newer units unsolder the black step-start relay wire and power resistor from the interlock. In older units unsolder the 10-ohm power resistor and black step-start relay wire from the top terminal of TB (photo terminal 1).
- 4.) Unsolder the green relay wire from the jumper between TB pins 3 and 4.
- 5.) Remove the large vertically mounted step start relay. It is the relay in the middle of the rear panel below the interlock. **Note: Do not mistakenly remove or disturb the 12Vdc coil power relay in the upper corner.**

The step-start relay is normally held loosely by a single screw or stud. The step-start relay should have had a foam tape under it for sound deadening.

- 6.) This is the new AL12-series step start as shipped.





- 7.) The new step-start board mounts by one hole with a single #6 fastener and double-sided tape to the original relay mounting hole. This board ships to you with the tape and insulating fiber guard attached along with one longer screw and nut.
- 8.) Remove the four front Phillips screws and mount the backing plate first for best fit. The unit is intentionally square to allow any of four mounting positions. This is an example of a typical install. While the plate is forced fit by hole location, the board can be rotated every 90-degrees depending on user preference. Just be sure the board clears all other wires, especially make sure the resistors are not against anything.

